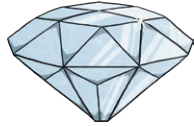


# Properties of Materials

## hard

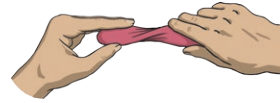
not easily  
broken or  
pierced



A hard diamond.

## squashy

easily crushed  
or squeezed



The play dough is squashy.

## smooth

an even and  
regular surface



Some smooth pebbles.

## absorbent

able to soak  
up liquid



The sponge is absorbent.

## bumpy

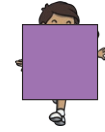
uneven, raised  
patches



This shell is bumpy.

## opaque

cannot be  
seen through



She is hidden by the opaque screen.

## dull

lacking shine  
or brightness



The moth's wings are dull.

## brittle

hard, but may  
break easily



The glass is brittle.

## translucent

allowing some  
light to pass  
through



The screen is translucent.

# Properties of Materials

## rigid

unable to be bent or forced out of shape



Stone is rigid.

## transparent

can be seen through



This glass is transparent.

## soft

not firm to the touch



The kitten has soft fur.

## flexible

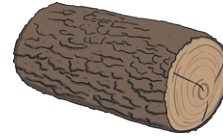
able to bend



A flexible spring.

## rough

uneven, irregular surface



The log has rough bark.

## waterproof

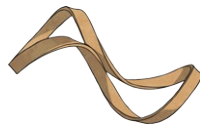
repels water and liquids



A waterproof coat.

## elastic

springs back once stretched



An elastic band.

## shiny

reflects light, smooth surface



A shiny silver spoon.

## conductor

lets heat, electricity or sound to pass through it



Some metals are conductors of electricity.